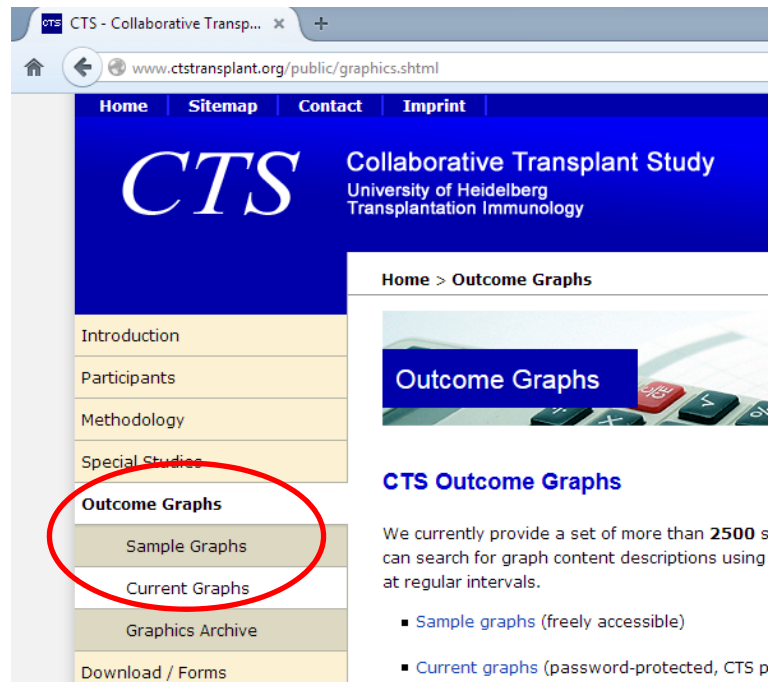
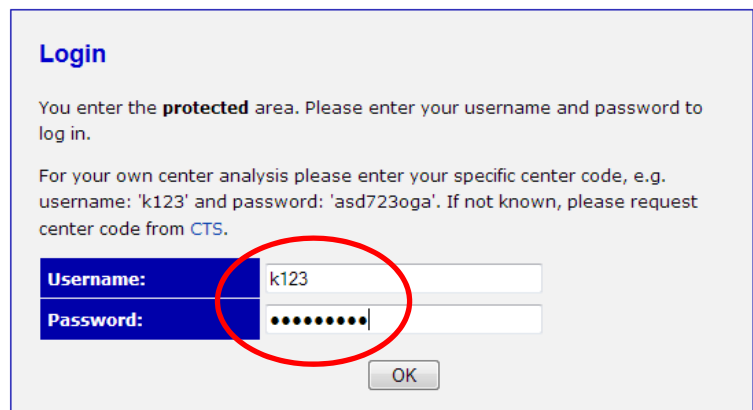


# Manual for analysis of your own center's data

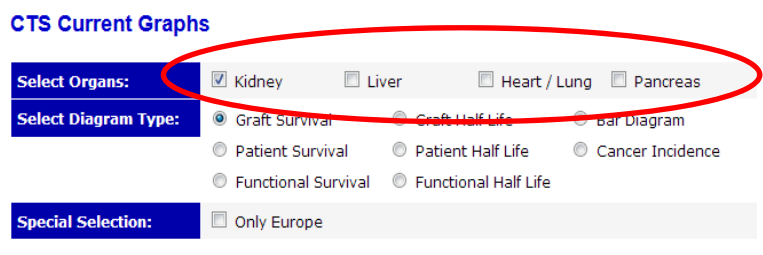
- (1) Go to the CTS website [www.ctstransplant.org](http://www.ctstransplant.org) and select from the menu **Outcome Graphs** the option **Current Graphs**.



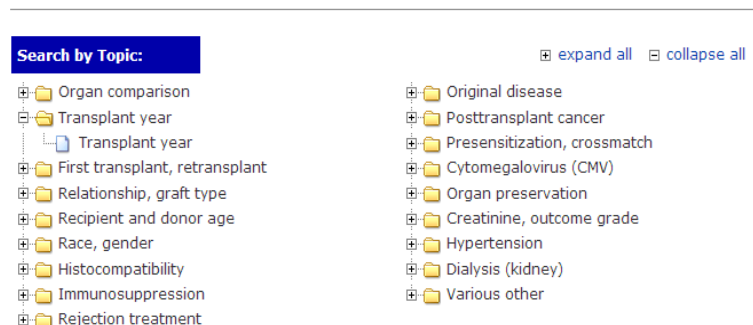
- (2) Login with your **Username** (lower case k, h or l for the organ followed by the cts number of your center) and **Password** (three lower cases + three digits + three lower cases) which was sent to you previously.



- (3) Select corresponding to your login the **organ** and a **diagram type** (**Functional Survival** meaning **Death Censored Graft Survival** and **Half Life** analysis generating linear regression curves on a logarithmic scale).



- (4) You can choose now the topic of interest and by clicking on the **plus** sign further subtopics.



(5) If you click on the title of a topic or search for keywords, a list of links to the corresponding figures with title and curve legends will appear. Simple basic figures are listed when the search term **basicstat** is entered.

Search for Keywords

---

**Search Results** (Found 15 matches for keyword: basicstat)

(Restriction to maximum 100 graphs)

OR

(Click on check box on far right to select graphs)

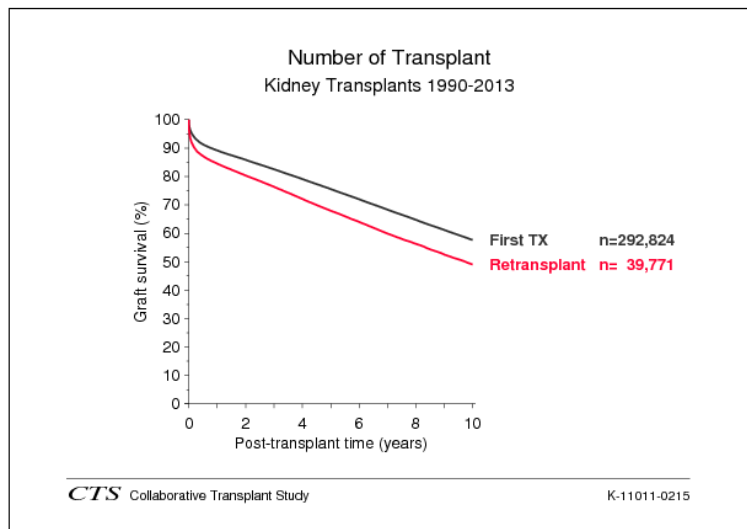
OR

Click on a link below to view single graph

- Graft Survival, Deceased Donor Kidney Transplants 1990-2013**   
[First TX](#)
- Number of Transplant, Kidney Transplants 1990-2013**   
[First TX, Retransplant](#)
- Transplant Year, Kidney Transplants**   
[2010-2013, 2005-2009, 2000-2004, 1995-1999, 1990-1994, 1985-1989](#)

(6) You can either generate a single figure by clicking on the title or all listed figures (click **Show all results**) or any figure from the list (check the corresponding boxes on the right and press **Show Selected Graphs**) in a separate window.

These graphs are now calculated with **all CTS data**. In the footnote on the lower right side you will find an identifier of the graph including the month and year of the data status which you should cite if you wish to use the graph in publications.



(7) You can copy the graph or download it in higher quality in **PDF format** (black/white or color) or as **PowerPoint slide** or **pixel graphics (png)**, depending on your requirements.

Download:

(8) Finally, by clicking on the link **Select corresponding analysis of your own center** you will be able to generate the corresponding chart with your own center's data.

[Select corresponding analysis of your own center](#)

(9) There are options to modify the period of transplantation (from **First transplant Year ... to Last transplant Year ...**) and the length of the **X-Axis, No. Years** (Post-transplant time). If you press the button **Show own center**, you will receive the figure with **your own center's data**.

**CTS Center Analysis**

Type:  Graph  Stat

Optional:

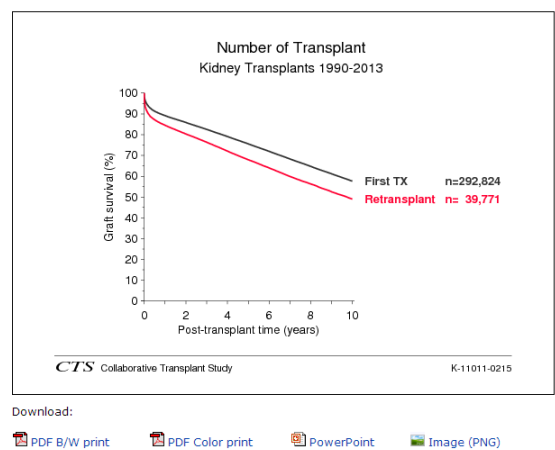
First Year:

Last Year:

X-Axis, No. Years:

Leave blank to use default years!

■ Abbreviations  
■ CTSstat FAQs



Download:

(10) If you select the function **Stat**, results of the Kaplan-Meier survival analysis with tables on survival rates, standard errors, log-rank p-values and number of patients with follow up will be shown.